

Turning

1 **Nakamura WT-100**

8-axis CNC lathe with driven tools for complete machining from bars with a maximum diameter of 42mm



1 **Mori-Seiki NLX2000**

3-axis CNC lathe with 12 driven tools



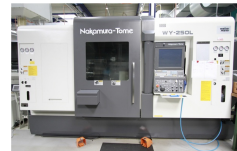
1 **Nakamura WY-250L / GR210**

7-axis CNC lathe with driven tools for complete machining up to a maximum diameter of 225mm. Equipped with an integrated gantry loader Nakamura GR-210



1 **Nakamura WY-250L**

7-axis CNC lathe with driven tools for complete machining from bars with a maximum diameter of 65 mm



2 **Hardinge Quest 6/42 SP**

High precision CNC lathe for hard turning



1 **Nakamura WY-250**

7-axis CNC lathe with driven tools for complete machining from bars with a maximum diameter of 65mm



1 **Nakamura WT-100**

8-axis CNC lathe with driven tools for complete machining from bars with a maximum diameter of 42mm



- 2 [Maier 26 D](#)
CNC Swiss-type lathe with counter spindle and driven tools, equipped for whirled threading and deep drilling. 26-mm passage



- 1 [Maier ML 26 E](#)
CNC Swiss-type lathe with counter spindle and driven tools, equipped for whirled threading and deep drilling. 26-mm passage



- 2 [Maier ML 32 E](#)
CNC Swiss-type lathe with counter spindle and driven tools, equipped for whirled threading. 32-mm passage



- 1 [Hardinge Quest 8/51 SP](#)
High-precision CNC-lathes for machining hardened materials. The machine is equipped with driven tools and a controlled tailstock. Workpiece max. Ø 315 mm, max. working length 520 mm



- 2 [Hardinge Quest T42 SP](#)
High-precision CNC-lathes for hard-turning



- 1 [Tsugami BS26-III](#)
7-axis CNC Swiss-type lathe with up to 9 driven tools and spindles for complete machining of parts up to a max. Ø 32 mm



- 1 [Tsugami BS-32\(E\)-II](#)
7-axis CNC Swiss-type lathe with up to 9 driven tools and spindles for complete machining of parts up to a max. Ø 32 mm



- 1 [Haas ST-10](#)
CNC-lathe with driven tools and a tailstock



- 1 [Nakamura WTS-150](#)
11-axis CNC-lathe with driven tools for complete tooling right from the bar. Equipped with a bar feeder



- 1 [Nakamura WT-250](#)
7-axis CNC-lathe with driven tools for complete tooling right from the bar. Equipped with a bar feeder



- 2 [Nakamura TW-10](#)
6-axis CNC-lathe with driven tools for complete machining of chuck parts up to a max. Ø 150 mm. Equipped with charge/discharge robot



- 2 [Nakamura TW-20](#)
6-axis CNC-lathe with driven tools for complete machining of chuck parts up to a max. Ø 51 mm. Equipped with bar loader and take-off robot



- 1 [Nakamura TW-20](#)
6-axis CNC-lathe with driven tools for complete machining from the bar up to a max. Ø 51 mm. Equipped with a bar feeder



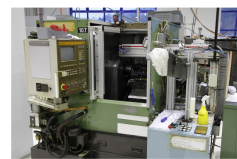
- 1 [Okuma LU15](#)
CNC lathe with tailstock, maximum turning diameter 250 mm



- 1 [Polygoner](#)
High-precision CNC-lathe for precision turning work up to a max. Ø 100 mm. Equipped with charge/discharge robot



- 1 [Polygoner](#)
High-precision CNC-lathe for precision turning work up to a max. Ø 150 mm. Equipped with charge/discharge robot.



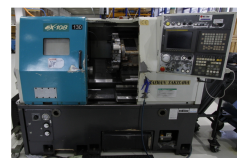
- 1 [Polygoner](#)
High-precision CNC-lathe for precision turning work up to a max. Ø 150 mm



- 2 [Eguro Nuclet-10](#)
CNC-precision lathes for machining of parts of up to Ø 100 mm



- 1 [Takisawa EX-Cell Mate Series 180](#)
CNC lathe with counter spindle and driven tools.



- 1 [Weiler Condor VC Plus](#)
Weiler conventional lathe



- 1 **Maier ML 26 DY**
CNC Swiss-type lathe with counter spindle and driven tools, equipped for whirled threading and deep drilling. 26-mm passage



- 1 **Muratec**
6-axis CNC-lathe with driven tools for complete machining up to a max. Ø 225 mm. Equipped with an integrated gantry loader

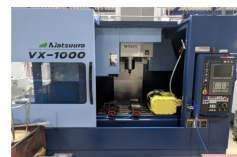


Milling / Drilling

- 1 **Kitamura**
Horizontal machining center with pallet changer and RoboJob loading robot



- 1 **Matsuura VX-1000**
Vertical machining centre with Nikken dividing and swivelling device



- 1 **Makino DA300**
5-axis machining centre with 60 tool places, 20'000 rpm and RoboJob loading robot



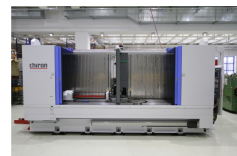
- 1 **Brother Speedio S700X1**
Vertical machining center with 21 tools and RoboJob loading robot



- 1 **Mikron 400 HSM U**
5-axis horizontal machining center with pallet changer



- 1 **Chiron Mill 3000 high speed plus**
CNC-machining center with 40 stations (X 3000 / Y 610 / Z 630 mm) with an NC-swivel head +/-110°



- 6 **Brother TC-22B-0**
CNC-machining center with 28 tool stations (X 700 / Y 400 / Z 410 mm)
Equipped with CNC-dividers (separate/swivel)



- 1 **Tongtai**
CNC machining centre with 30 tool places



- 1 **Mori Seiki NV-5100 II**
CNC-machining center with 30 tool stations (X 1020 / Y 510 / Z 510 mm)
Equipped with 4th and 5th axis (separate/swivel).



- 1 **Fanuc Robodrill a-T21i FL**
CNC machining centre with 21 tool places. The machine is equipped with a dividing and swivelling unit which can be loaded automatically



- 1 **Chiron FZ 15K W Magnum FlexCell Uno**
CNC-Milling center with 48 tool places and workpiece changing table with two swivel rotary table units on each side. The machine is also equipped with robotic arm for loading and unloading workpieces during machining.



- 3 **Brother TC-S2D**
CNC-machining center with 21 tool stations (X 700 / Y 400 / Z 300 mm)
Equipped with CNC-dividers (separate/swivel)



- 1 **Fehlmann Picomax 56 TOP**
CNC milling machine



- 1 **Matsuura V Plus 1000**
CNC machining center with 40 workstations (X 1020 / Y 550 / Z 500 mm) equipped with 4th and 5th axis, and high-pressure and fire extinguisher system. Optimum system for machining titanium and stainless steel.



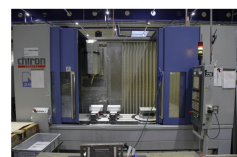
- 1 **Chiron FZ 12 KS HSP**
CNC-machining center (X550 / Y320 / Z360 mm) with high-speed spindle (30000 U/min) for machining very small metal and plastic parts. The machine is equipped with a CNC part-swivel device.



- 2 **Mori Seiki NV-5000**
CNC-machining center with 30 stations (X 1020 / Y 510 / Z 510 mm)
Equipped with 3x-CNC-dividers (separate/swivel)



- 1 **Chiron Mill-2000**
CNC-machining center with swivel head and 40 stations (X 2000 / Y 480 / Z 450 mm), left side equipped with divider as 4th axis and right side with integrated rotating table for complete machining. The removable partition makes possible rational shuttle operation and front machining of longer parts.



- 1 **Mori Seiki NV-5000**
CNC-machining center with 30 tool stations (X 1020 / Y 510 / Z 510 mm)
Equipped with 4th and 5th axis (separate/swivel).



- 4 **Brother TC-22A**
CNC-machining center with 27 stations (X 500 / Y 400 / Z 410 mm)
Equipped with CNC-dividers (separate/swivel)



- 1 **Brother TC-31A**
CNC machining center with 27 stations and rotary pallet.



- 3 **Brother TC-22A**
CNC-machining center with 27 stations (X 500 / Y 400 / Z 410 mm)



- 2 **Mori Seiki SV-400**
CNC-work centers with 30 work stations (X 560 / Y 410 / 460 mm)
equipped with a 4th axis and CHICK chuck system for multiple clamping and 3-sided machining.



- 1 **Kitamura My-0**
CNC-machining center with 16 stations and rotary pallet (X 300 / Y 250 / Z 250 mm)



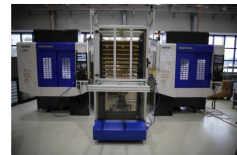
- 2 **Fehlmann Picomax 20**
conventional milling machine.



- 1 **Makino PS105**
CNC-Bearbeitungscenter



- 2 **Brother Speedio S700X1**
These two vertical machining centers, each with 21 tool places, are each equipped with a dividing and swivelling unit and linked to a Fanuc robot with integrated turning station. With this system, complex workpieces can be produced cost-effectively in large quantities.



Electrical discharge machining

- 1 **Makino U3**
Wire cutting machine



- 1 **Madra BT-2 ATC**
Electrical discharge machining system for producing bore holes from 0.2 mm diameter and depths to 200 mm. Optimum for series, thanks to the 12x electrode changer and the CNC-controlled table.
Positioning X 340 mm, Y 240 mm and Z 300 mm

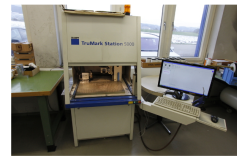


Laser writing

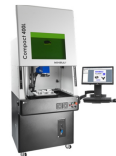
- 1 **Trotec Speedy 300 flexx**
Laser engraver for engraving plates and other products out of metal. Thanks to two different light sources it is also capable of engraving and cutting plastic and wood. (X 740 / Y 430mm)



- 1 **Trumpf VMc1**
Labeling laser, equipped with controlled divider. (X 120 / Y120 mm)



- 1 **Minelli Compact 400L**



Grinding

- 1 **Brand**
Plain grinder (X 800 / Y 250 / Z 250 mm)



- 1 **Micorex**
Centerless grinder



- 1 **Deckel S11**
Tool grinding machine



Measurement

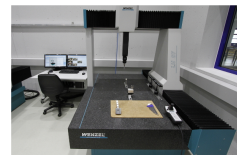
- 1 **Keyence IM series**



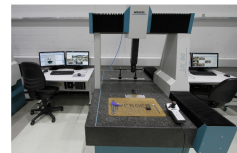
- 1 **Wenzel LH-65**
CNC-gesteuerte 3-D Koordinaten-Messmaschine mit schwenkbarem Tastkopf zum scannen RENISHAW ? und Tasterwechsler (X 650 / Y 750 / Z 500 mm)



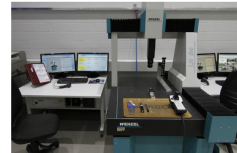
- 1 **Wenzel LH-87**
CNC-controlled 3-D coordinate measuring machine with swivel-adjustable RENISHAW PH10 / TP200 sensor head and sensor changer (X 800 / Y 1000 / Z 700 mm)



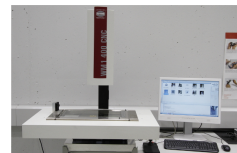
- 1 **Wenzel LH-65**
CNC-controlled 3-D coordinate measuring machine with swivel-adjustable RENISHAW PH10 / TP200 sensor head and sensor changer (X 650 / Y 750 / Z 500 mm)



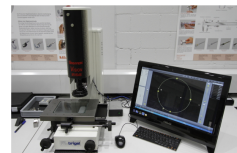
- 1 **Wenzel LH-54**
CNC-controlled 3-D coordinate measuring machine with swivel-adjustable RENISHAW PH10 / TP200 sensor head and sensor changer (X 500 / Y 600 / Z 400 mm)



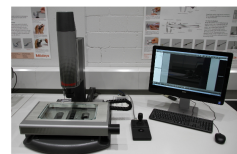
- 1 **Schneider WM1 400 CNC**
CNC-Optical measuring machine (X 400 / Y 200 / Z 200 mm).



- 1 **Starrett Vision MV646-SR230**
Camera measuring system, magnification 30x-200x (X 150 / Y 100 / Z 150 mm).



- 1 **Starrett Galileo AV300 CNC**
Camera measuring system, magnification 25x-180x (X 300 / Y 150 / Z 140 mm).



- 4 **Tesa Micro Hite**
Vertical length measuring instruments



- 1 **Restpartikel-Messgerät Jomesa**



- 1 **Zeiss ScanMax**

Sawing

- 1 **Behringer HBE Dynamic**
Fully automatic band saw for slices up to 320 mm



- 1 **Kasto ssb A2-CC**
Fully automatic band saw for slices up to 280 mm



- 1 **Rohbi RKA 72**
Fully automatic circular saw



Trowalising

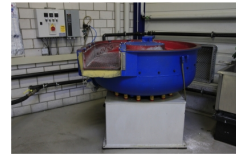
- 1 **Trowal CC215**
CC215 round vibrator 136 liters



- 1 **Trowal M400**
M400 tub vibrator 320 liters



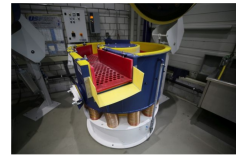
- 1 **Trowal CD400**
CD400 round vibrator 251 liters



- 1 **Spalek**



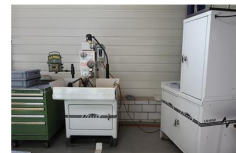
- 1 **Trowal CF300**
CF300 circular vibrator with screening zone. 190 litres filling capacity



- 1 **Trommel**
Doppeltrommel Anlage für Kleinteile

Honing

- 1 **Sonnen**
Manual honing machine for processing 2–150 mm holes



Robots

- 4 **RoboJob**
6-axis articulated arm robots for loading and unloading
CNC-machines



- 1 **UR5**
6-Achs Knickarm-Roboter zum Perlstrahlen



- 1 **FlexCell Uno**
6-axis articulated arm robots for loading and unloading
CNC-machines

- 1 [Wick moneymaker](#)
6-axis articulated arm robots for loading and unloading
CNC-machines



- 1 [Fanuc Robot "SERO"](#)
Robot for loading two machining centres. The system is equipped
with a turning station for the production of complex parts in two
clamping positions in large batch sizes



Reinigen

- 1 [Hösel](#)
A solvent- and water-based cleaning system with ultrasound and
vacuum for spotless final cleaning of metal parts.



- 1 [AdunaTEC](#)
Programmable spray washing machine with rotatable basket, 2 water
reservoirs for pre-wash and rinsing, with final hot-air drying.



- 2 [x-turn](#)
Portable spray cleaning system with rotary table.

- 2 [noname](#)
Industrial Washing Machine

- 2 [noname](#)
Ultrasound baths for cleaning small parts